



The Premier Manufacturer of High Quality Accessories for Industrial Radiography

RADAC® - Lead Intensifying Screens Product Features

- ✓ **Quality Assured** – rigorous quality control throughout the production process ensures that RADAC screens are free from defects that could interfere with the interpretation of the film.
- ✓ **Flexible and durable** – the high quality backing used in the production of RADAC screens means that they can be bent over and over again to a small radius without cracking resulting in a lower whole life cost. The high flexibility of RADAC screens ensures that optimal film-to-screen contact can be achieved.
- ✓ **High Intensification** – A peel-off plastic film cover protects the surface of the RADAC lead screen ensuring they are received in perfect condition. The high quality un-coated lead used in RADAC screens results in higher intensification and an absence of problems associated with lacquer coatings.
- ✓ **Full range of cut sizes** – RADAC screens are available in all standard metric and imperial sizes and are cut according to BS3490:1985 and ISO 5655-2000. Bespoke non-standard size screens can be manufactured to order. RADAC screens feature rounded corners to prevent damage to both films and cassettes.
- ✓ **Full range of thicknesses** – RADAC screens are available in thicknesses from 0.05mm to 3.0mm Pairs of any thickness combination can be supplied. Intermediate (centre) screens are also available with any lead thickness.





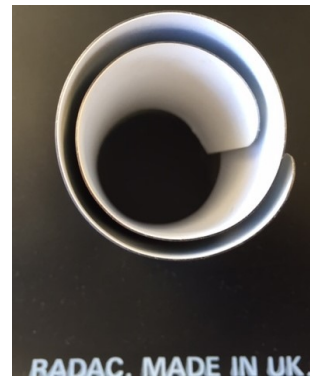
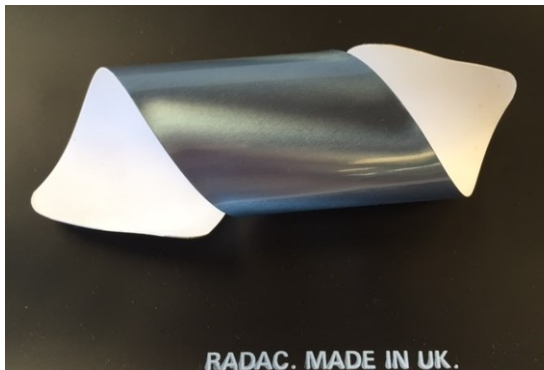
The Premier Manufacturer of High Quality Accessories for Industrial Radiography

RADAC® - Lead Intensifying Screens

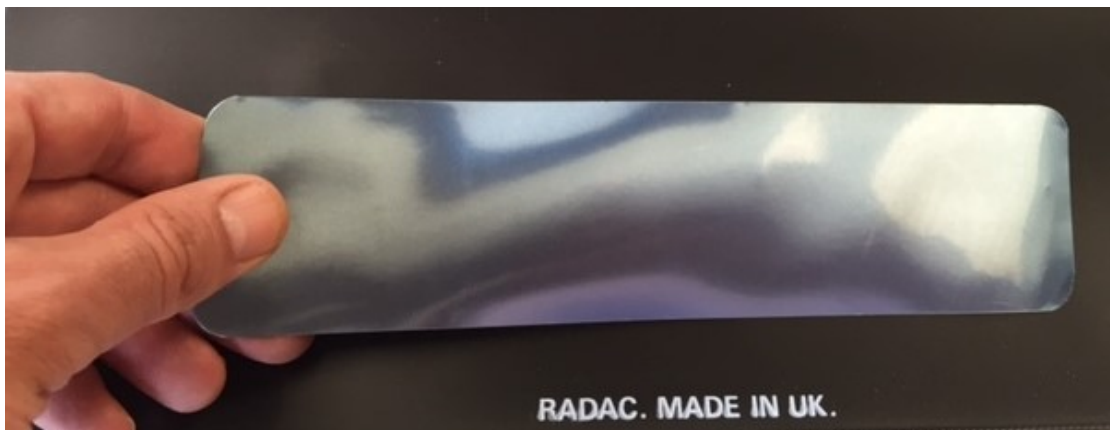
Flexible and durable – the high quality backing used in the production of RADAC Lead Intensifying Screens means that they can be bent over and over again to a small radius without cracking resulting in a lower whole life cost. The high flexibility of RADAC Lead Intensifying Screens ensures that optimal film-to-screen contact can be achieved.



RADAC® lead screen as opened from



RADAC® lead screen having been repeatedly bent and rolled to tight radius



RADAC® lead screen flattened back out after bending